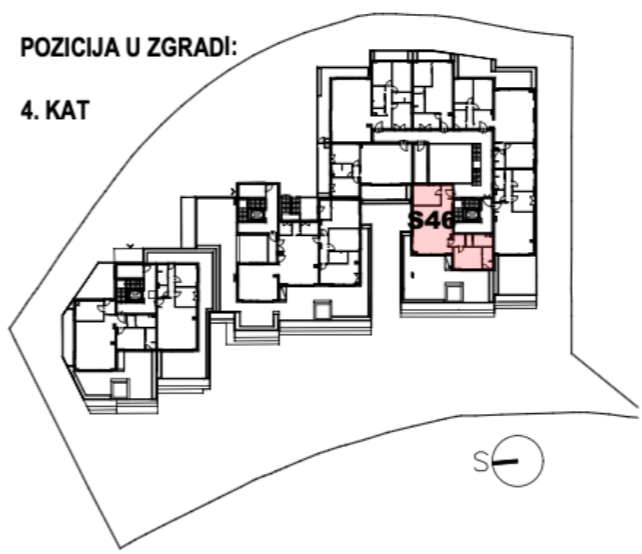
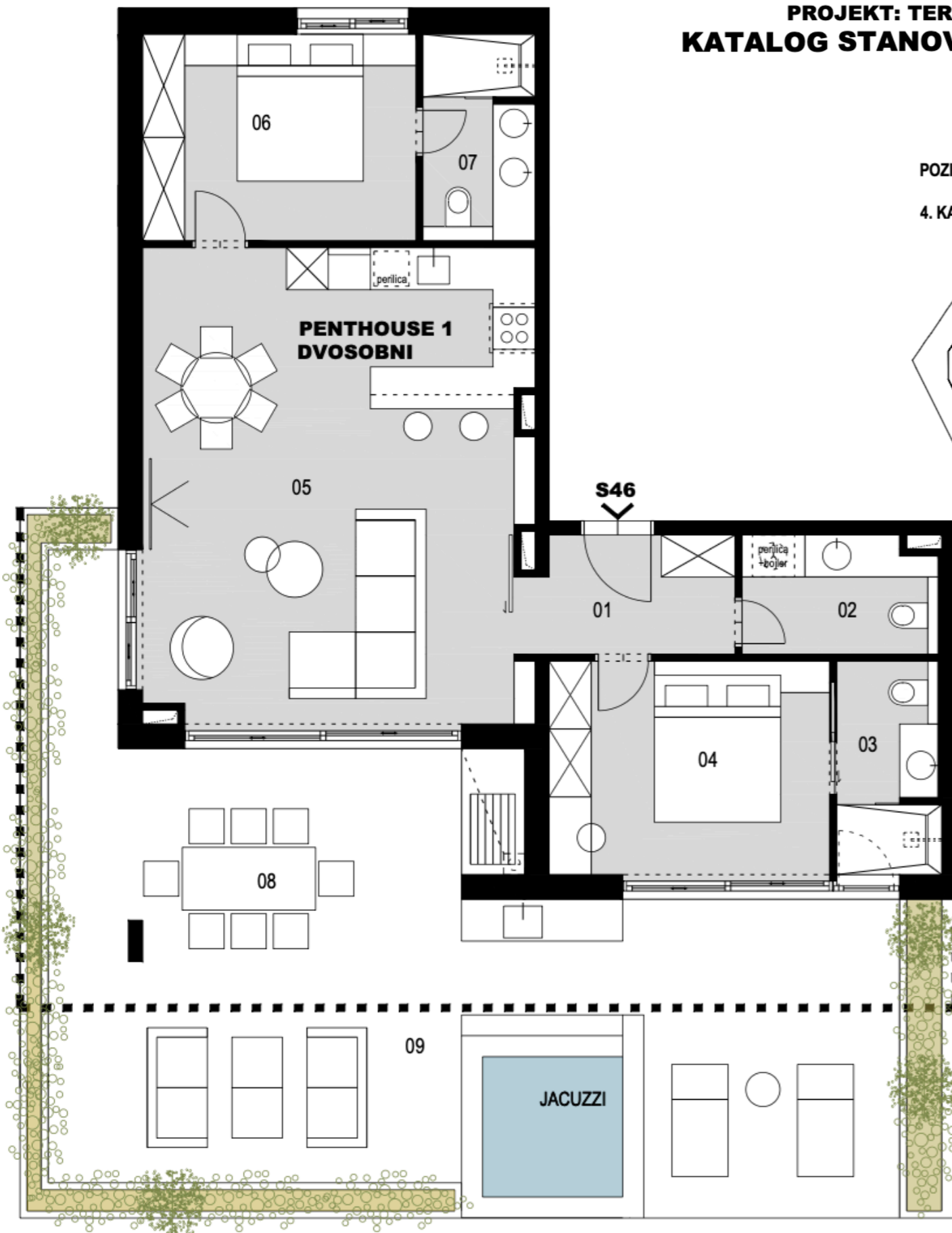


**PROJEKT: TERASE PODSTRANA  
KATALOG STANOVA - STAN 46 - 4. kat**



**NETO POVRŠINE STANA br. 46 - 4.kat:**

01 ULAZ	5.05 m <sup>2</sup>
02 WC/PRAONICA	4.67 m <sup>2</sup>
03 KUPAONICA 1	4.49 m <sup>2</sup>
04 MASTER SOBA 1	12.54 m <sup>2</sup>
05 DNEVNI BORAVAK, KUHINJA I BLAGOVAONICA	37.67 m <sup>2</sup>
06 MASTER SOBA 2	11.58 m <sup>2</sup>
07 KUPAONICA 2	4.73 m <sup>2</sup>

**UKUPNO STAN: 80.73 m<sup>2</sup>**

08 TERASA	39.04 m <sup>2</sup>
TERASA x koeficijent 0,5	19.52 m <sup>2</sup>
09 TERASA	40.04 m <sup>2</sup>
TERASA x koeficijent 0,25	10.01 m <sup>2</sup>

**SVEUKUPNO STAN + TERASA: 110.26 m<sup>2</sup>**

**NAPOMENA: SVIM STANOVIMA PRIPADAJU PARKIRNA MJESTA U GARAŽI TE SPREMIŠNI PROSTORI.**